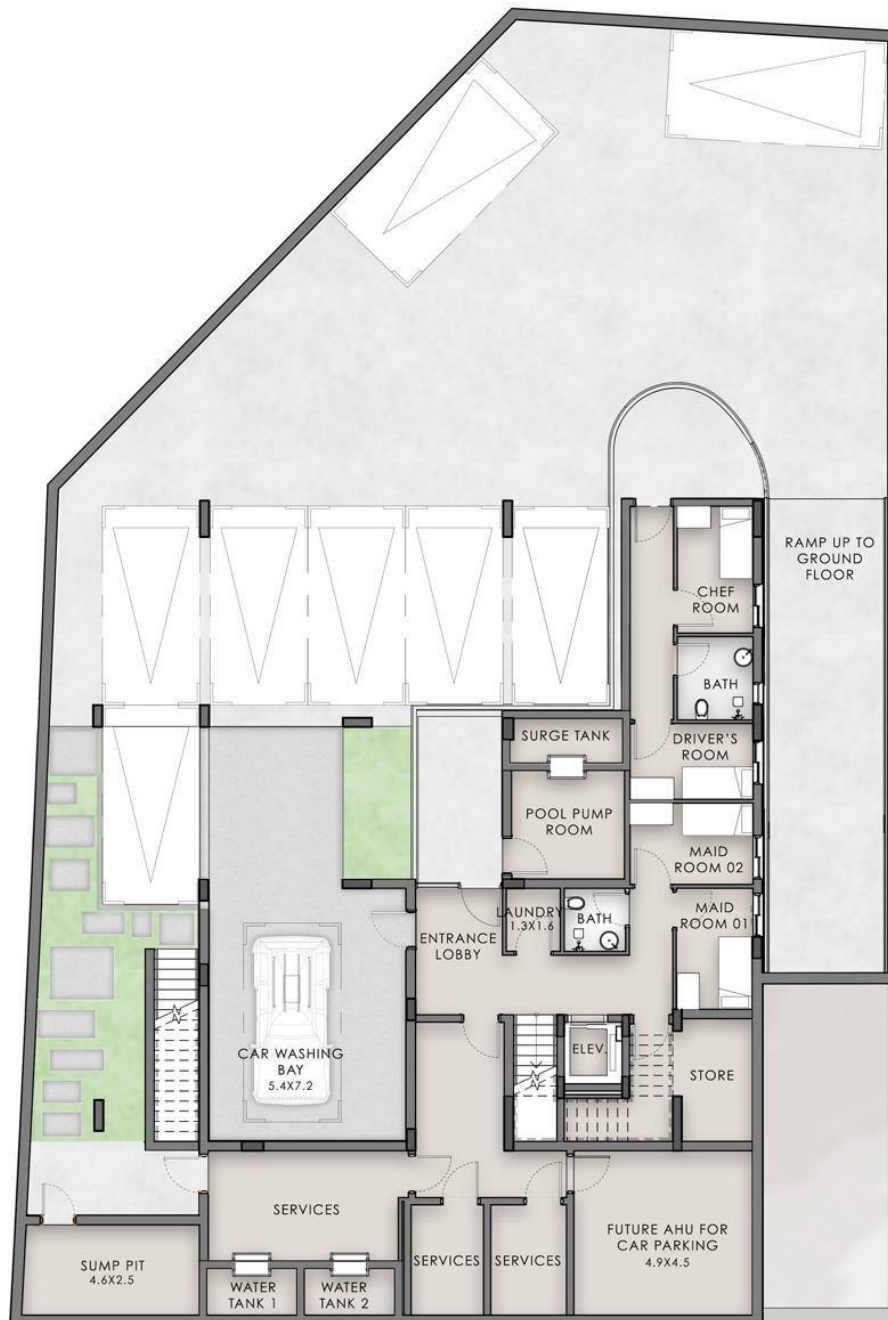


# Villa Type Four - Plot 11

Number of bedrooms : 5 bedrooms

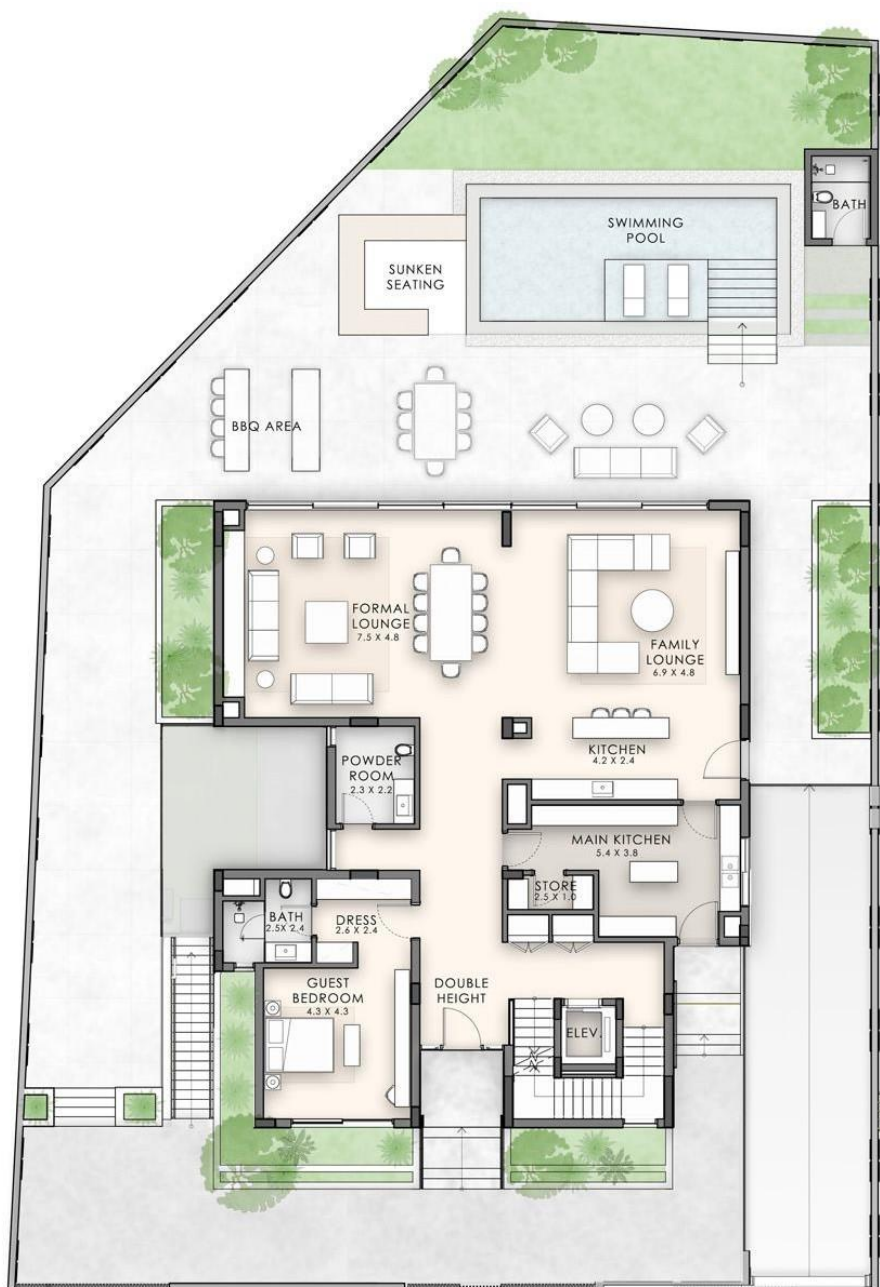
Plot Area : 810 SQ.M | 8722 SQ.FT • BUA : 1,480 SQ.M | 15,933 SQ.FT



Basement Area : 670 SQ.M | 7,208 SQ.FT

## Disclaimer:

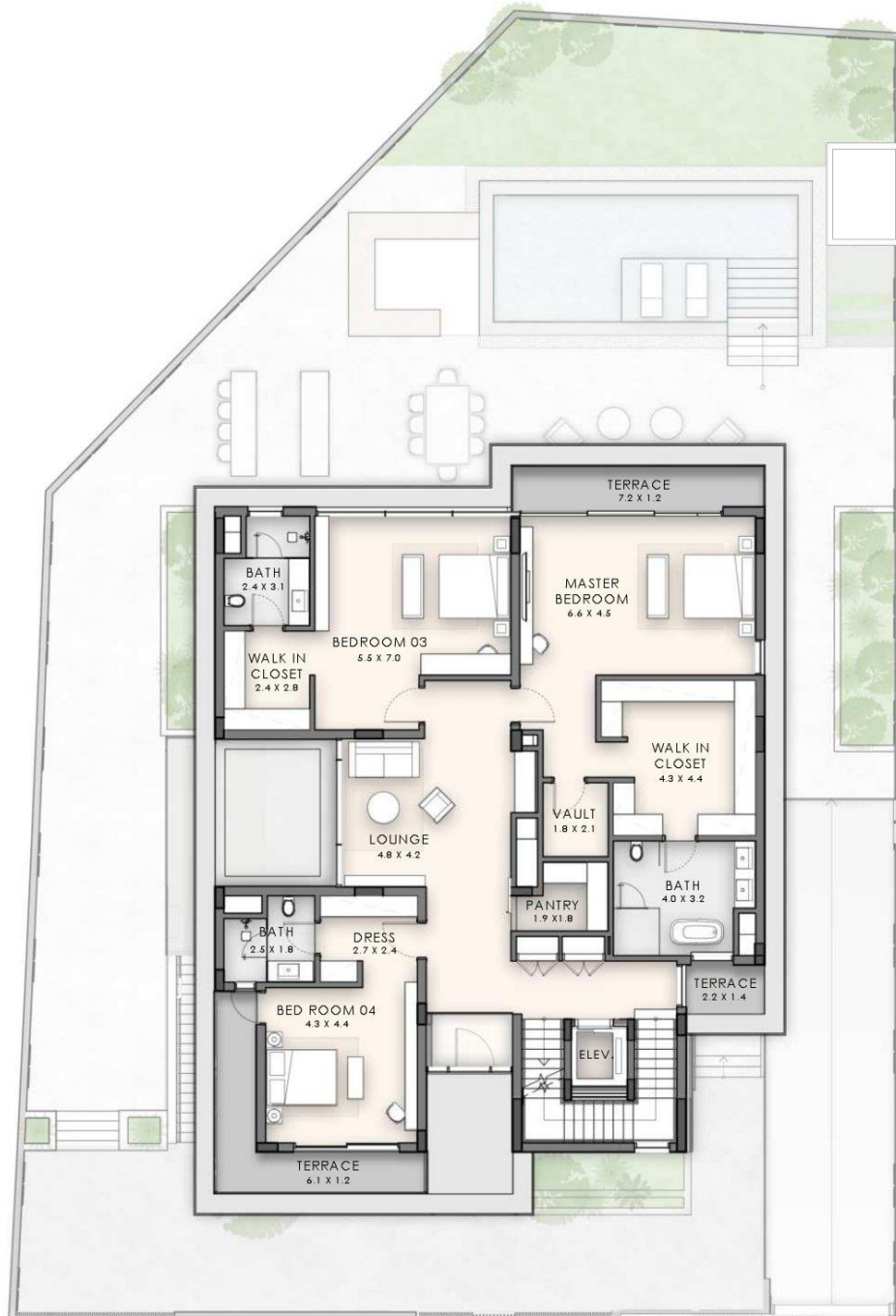
(1) All materials, dimensions, renders and drawings are approximate and for illustration purposes only. (2) Information is subject to change without notice. (3) Actual areas may vary from the stated area. (4) Drawings not to scale. (5) The developer reserves the right to make revisions/alterations without any liability whatsoever. (6) Units are sold as unfurnished, without furniture, fittings, etc.



Ground Area : 253 SQ.M | 2,719 SQ.FT

**Disclaimer:**

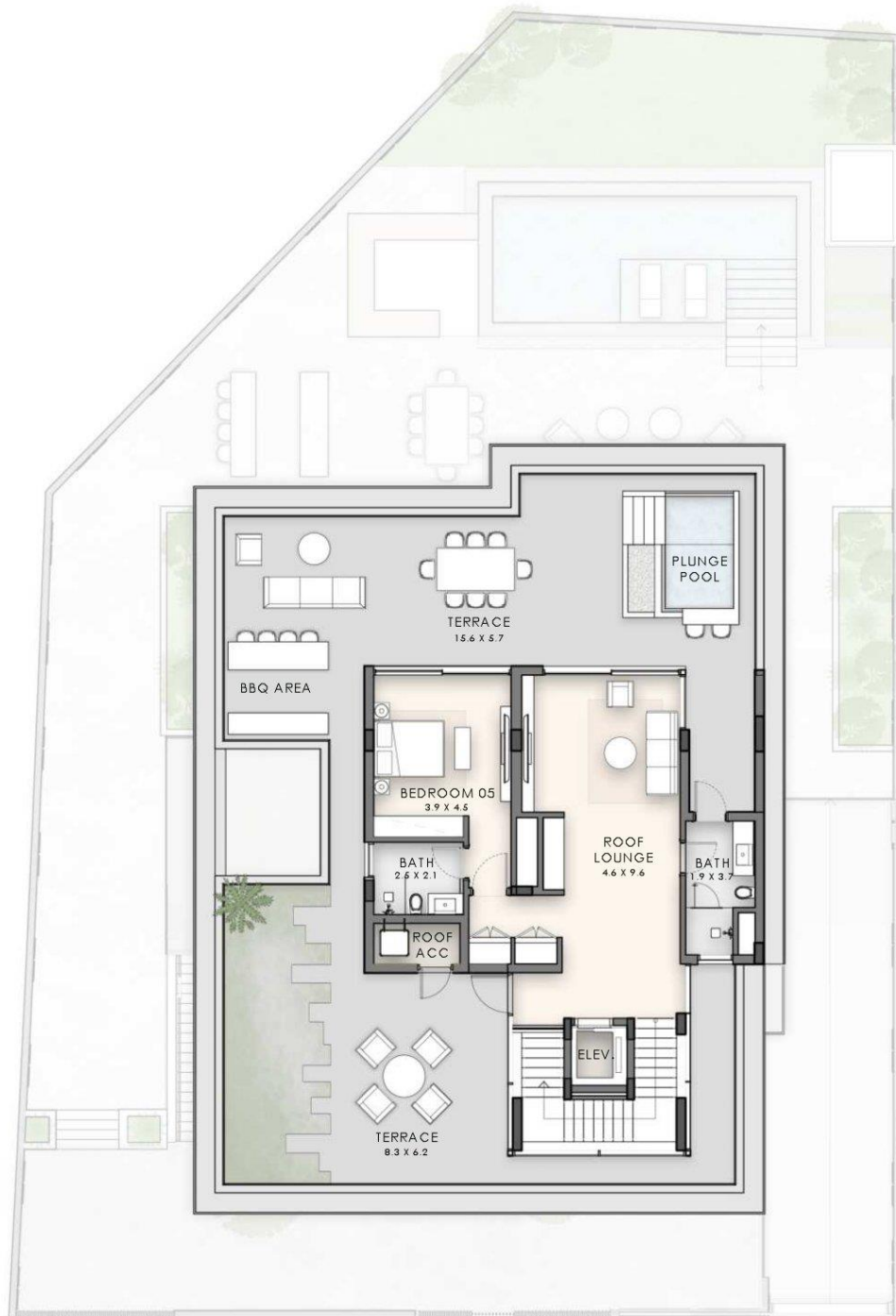
(1) All materials, dimensions, renders and drawings are approximate and for illustration purposes only. (2) Information is subject to change without notice. (3) Actual areas may vary from the stated area. (4) Drawings not to scale. (5) The developer reserves the right to make revisions/alterations without any liability whatsoever. (6) Units are sold as unfurnished, without furniture, fittings, etc.



First Area : 264 SQ.M | 2,846 SQ.FT

**Disclaimer:**

(1) All materials, dimensions, renders and drawings are approximate and for illustration purposes only. (2) Information is subject to change without notice. (3) Actual areas may vary from the stated area. (4) Drawings not to scale. (5) The developer reserves the right to make revisions/alterations without any liability whatsoever. (6) Units are sold as unfurnished, without furniture, fittings, etc.



**Second Area : 294 SQ.M | 3,160 SQ.FT**

**Disclaimer:**

(1) All materials, dimensions, renders and drawings are approximate and for illustration purposes only. (2) Information is subject to change without notice. (3) Actual areas may vary from the stated area. (4) Drawings not to scale. (5) The developer reserves the right to make revisions/alterations without any liability whatsoever. (6) Units are sold as unfurnished, without furniture, fittings, etc.