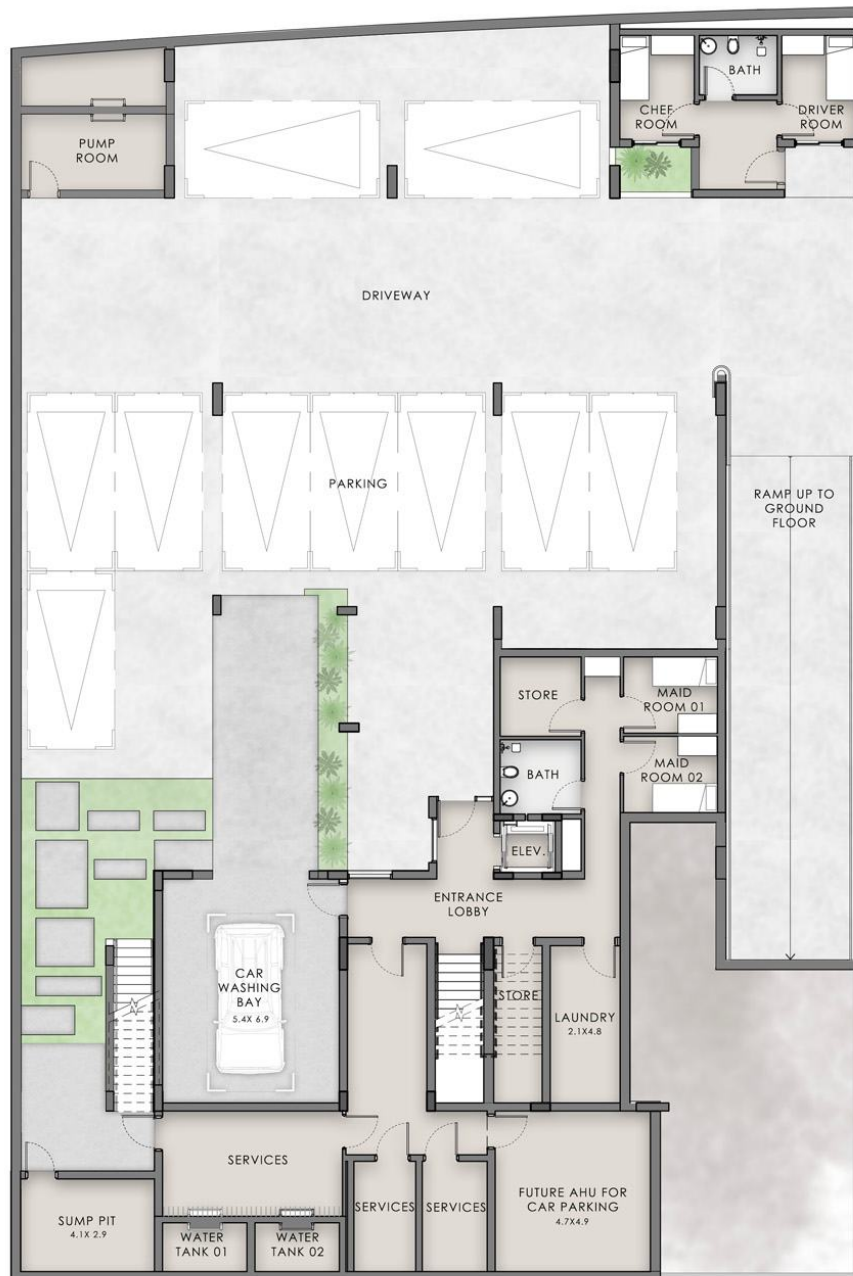


Villa Type Two - Plot 2

Number of bedrooms : 6 bedrooms

Plot Area : 1,004 SQ.M | 10,810 SQ.FT • BUA : 1,925 SQ.M | 20,725 SQ.FT



Basement Area : 840 SQ.M | 9,043 SQ.FT

Disclaimer:

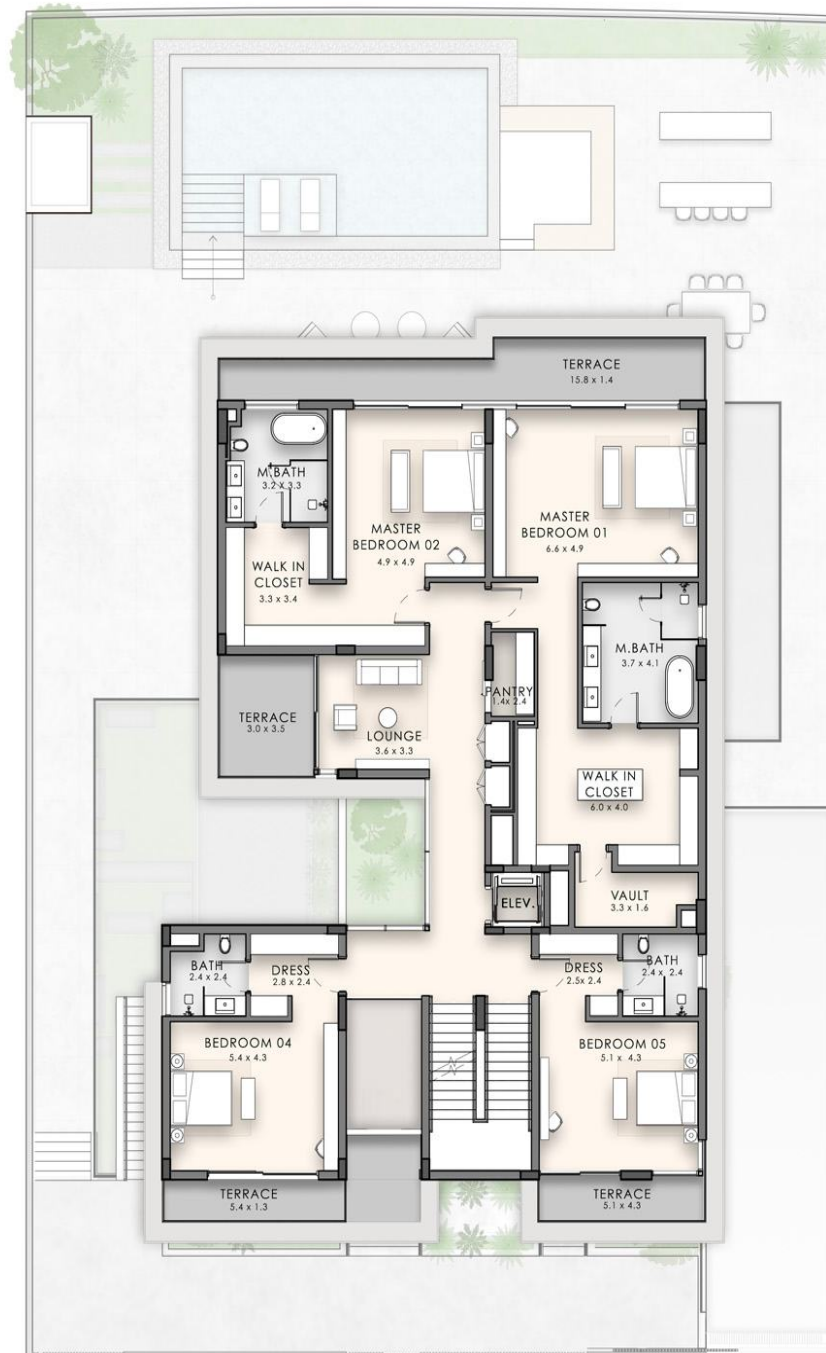
(1) All materials, dimensions, renders and drawings are approximate and for illustration purposes only. (2) Information is subject to change without notice. (3) Actual areas may vary from the stated area. (4) Drawings not to scale. (5) The developer reserves the right to make revisions/alterations without any liability whatsoever. (6) Units are sold as unfurnished, without furniture, fittings, etc.



Ground Area : 319 SQ.M | 3,431 SQ.FT

Disclaimer:

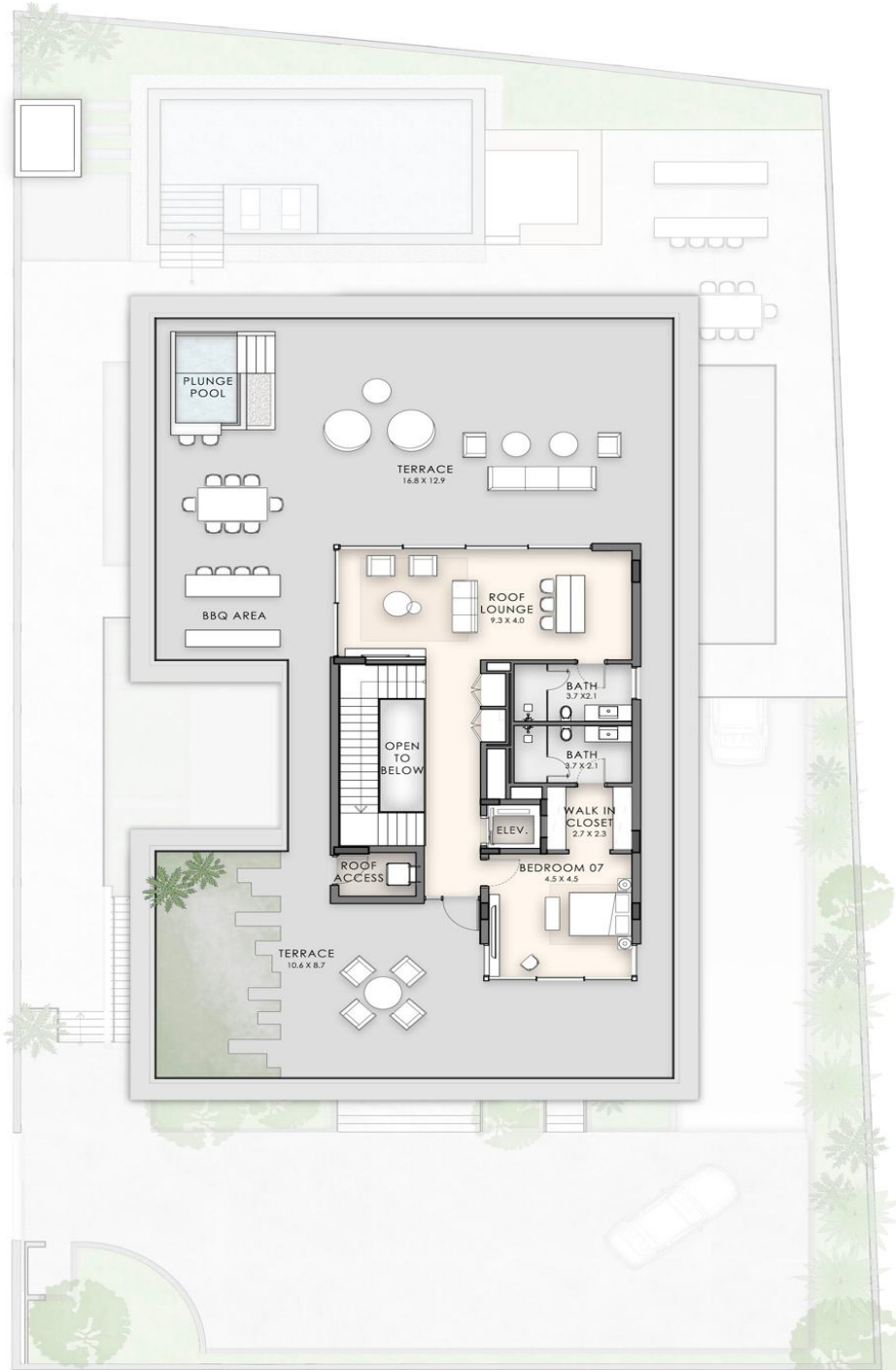
(1) All materials, dimensions, renders and drawings are approximate and for illustration purposes only. (2) Information is subject to change without notice. (3) Actual areas may vary from the stated area. (4) Drawings not to scale. (5) The developer reserves the right to make revisions/alterations without any liability whatsoever. (6) Units are sold as unfurnished, without furniture, fittings, etc.



First Area : 370 SQ.M | 3,981 SQ.FT

Disclaimer:

(1) All materials, dimensions, renders and drawings are approximate and for illustration purposes only. (2) Information is subject to change without notice. (3) Actual areas may vary from the stated area. (4) Drawings not to scale. (5) The developer reserves the right to make revisions/alterations without any liability whatsoever. (6) Units are sold as unfurnished, without furniture, fittings, etc.



Second Area : 397 SQ.M | 4,270 SQ.FT

Disclaimer:

(1) All materials, dimensions, renders and drawings are approximate and for illustration purposes only. (2) Information is subject to change without notice. (3) Actual areas may vary from the stated area. (4) Drawings not to scale. (5) The developer reserves the right to make revisions/alterations without any liability whatsoever. (6) Units are sold as unfurnished, without furniture, fittings, etc.